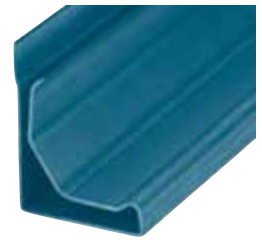
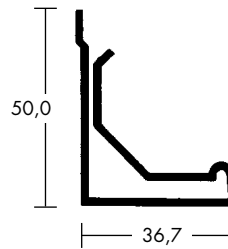


## 1.2.3 MEZ-STANDARD-FLANGE SYSTEM 40

- 45° supporting limb provides for optimum stability
- The version **LS** with injected sealing compound for an enhanced requirement of tightness
- Profile length: 5000 mm



Art.-Nr.	Material	Material thickness/mm	Moment of inertia / cm <sup>4</sup>	VPE m	Weight kg/m
141	Galvanised steel	1,25	3,502	250	1,550
141 LS	Galvanised steel	1,25	3,502	250	1,550

**DW/TM1**  
 approved for  
 Tightness classes  
 A, B, C, D  
 Connecting  
 line: J2

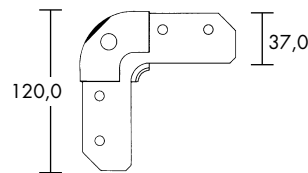
### Workmanship Guidelines:

Maximum edge length (mm)		
500 PA	1000 PA	2500 PA
3000 mm	2700 mm	2500 mm

- The duct grooved seams do not need to be notched up
- For details on frame production see technical features

## MEZ-CORNER

- Corner to be attached to the duct wall
- Sealing of the corners done on the inside of the air duct wall



Art.-Nr.	Material	Material thickness/mm	Screw hole ø mm	Deduction mass mm	VPE units	Weight kg/piece
245	Galvanised steel	5,00	13	30	150	0,250

