

## Tube fans

R... / RS...



## Contents

3	Description - R / RS
3	Application areas
3	Casing
4	Impellers
4	Motor and motor protection
4	Electrical connection
4	Installation
5	Air volume control
5	Scope of delivery
5	Construction scheme
6	Vendor information

## R / RS – Tube Fans

Construction of steel and plastic

- easy installation in any position
- easy electrical connection via terminal box
- motor protection by thermal contacts
- isolation class F



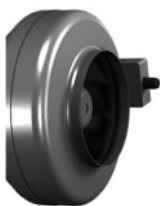
### Description:

Tube fans represent a technically perfect solution, uniting the advantages of axial fans, straight airflow and easy installation, with high pressure stability, low noise level and high efficiency of the radial fans.

### Application areas:



### Casing:

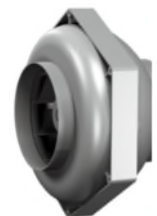


#### Steel type (R)

The casings are manufactured of galvanized sheet steel

#### Plastic type (RS)

The casings are equipped with an attractive and hardly inflammable plastic casing with integrated IP44 terminal box and guide vane.



### Advantages of the plastic types compared to sheet steel types:

- lower noise level
- completely corrosion resistant
- easy installation with mounting brackets
- higher pressure and better efficiency through guide vane

### Impellers:

The impellers are balanced together with the external rotor motors at two levels according to quality level G2.5/G 6.3 DIN ISO 21940-11.



**Type R:**

- 100-250 = Backward curved centrifugal impeller made of plastic.
- 250L-315M = Backward curved centrifugal impeller made of galvanized sheet steel.
- ab 355 = Backward curved centrifugal impeller made of aluminum.

**Type RS:**

- 100-250L = Backward curved centrifugal impeller made of plastic.
- ab 355 = Backward curved centrifugal impeller made of galvanized sheet steel.

### Motor and motor protection class:

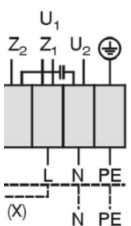
All Rosenberg fans are equipped with direct driven external rotor motors. All our fans have motor protection through thermal contacts in the motor windings as standard. The motors apply to protection class IP44/IP54.



The drive has due to an external rotor motor a space saving, compact and attractive design. The motor is fitted within the impeller, which enables the best possible cooling. For this reason a 100% variable speed control can be guaranteed. V-belts, additional tension bars and motor mounting devices are not necessary. Only well-dimensions ball-bearings, fitted on both sides and life time greased are used. Both ball-bearing seats are ground to high precision in one work process to eliminate any vibrations.

External rotor motors have extremely low starting currents. The windings comply to isolation class F. In addition the windings have a standard moisture impregnation.

### Electrical connection:



**Series R:**

The electrical connection is mounted on the housing by a terminal box with IP54 protection.

**Series RS:**

The electrical connection is mounted on the housing by a terminal box with IP44 protection.

### Installation:



Rigid folded spiral-seam ducts (Spiro), flexible aluminium or plastic ducts with standardized diameter can be used.

### Air volume control:

For more information see accessories!



#### 5-speed control

230V → RE / RTE

#### Infinitely variable control (except R315M.5FA)

230V → ED

### Scope of delivery:

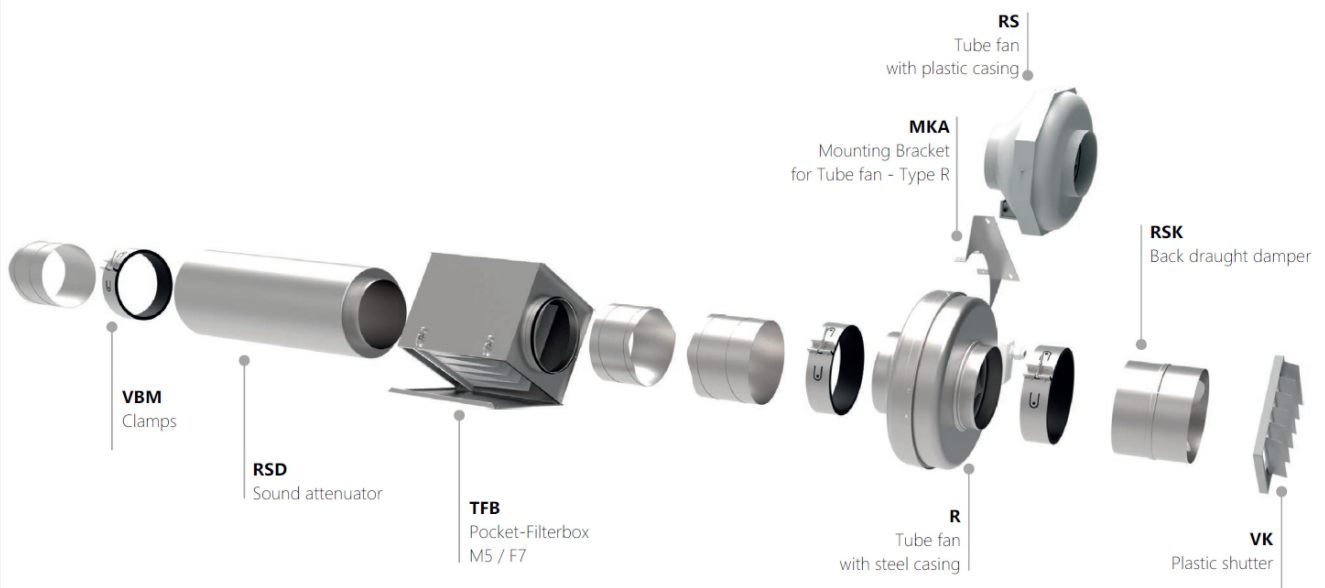
#### Type R:

- Tube fan (R)
- Documentation

#### Type RS:

- Tube fan (RS)
- Documentation

### Construction scheme:



## Vendor information:

### Warranty Guidelines:

The customer is responsible for the project design, selection and operation of the fans. The supplier gives warranty for faulty products, excluding further claims, in accordance with paragraph VII of the valid terms and conditions of business.

Warranty will not be given in the following instances:

Unfitted or inappropriate usage, incorrect mounting or faulty installation by the purchaser or a third party, normal wear and tear, incorrect or negligent handling, improper maintenance, unsuitable operating material, faulty installation, unsuitable ground and chemical, electrochemical or electrical influence - as long as they are not the responsibility of the supplier.

If the goods delivered of the manufacturer are faulty, the customer has the right to receive a replacement or replacement of the faulty parts up to the maximum value of the purchase price. The manufacturer also has the right to get the product repaired within a reasonable time period. The manufacturer must be informed immediately in the case of damage.

Noise level specifications of fans are simply valid in combination with Rosenberg controllers! The usage of third-party products will cause the Rosenberg guarantee claim.

The obligation to replace additional faults is herewith excluded. Our general terms of business are the basis for all further agreements for example: time periods to repair or replace. The general terms of business are available on our website [www.rosenberg.eu](http://www.rosenberg.eu) or directly from one of our sales representatives.

### Terms & Conditions of sale and delivery

We sell based on our Terms & Conditions of sale and delivery, supplemented by the "German conditions of delivery for products of the electrical industry". Prices are applicable ex works, excluding packaging. We reserve the right to change construction, design, technical data and prices without prior notification. Place of performance and court of jurisdiction is D-74653 Künzelsau.

Minimum order value: 150 Euro.

For orders under 150 Euro there will be a surcharge of 20 Euro.