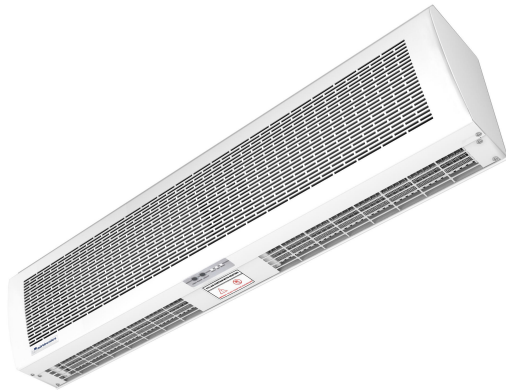




Characteristics



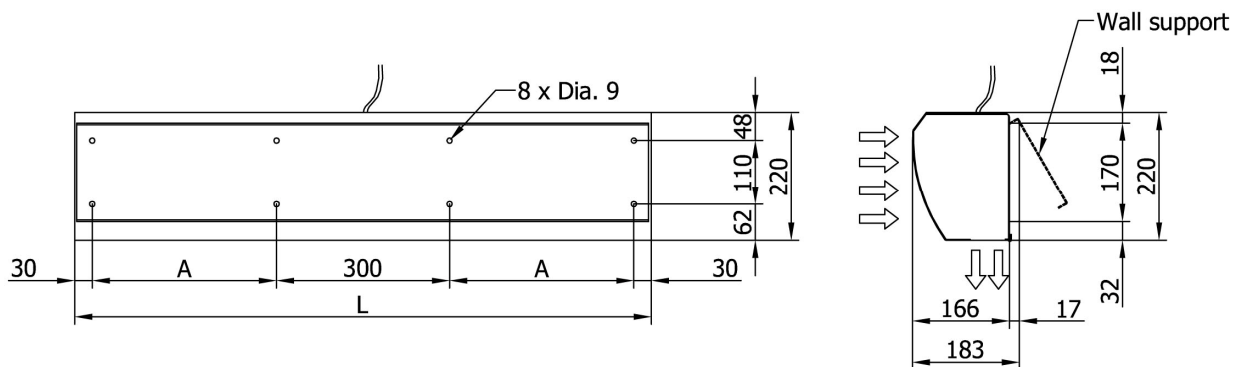
- Metallic self-supporting casing finished structural white colour RAL 9010.
- Cross-flow fans with conventional 2 speed motor.
- Electrical batteries PTC type, resistances manufactured with a ceramics semi-conductor. Power contactors included.
- Control of the unit through remote control with infrared or with the control panel integrated in the equipment.
- Support for wall mounting included.

Specifications

		ECO 1000 E	ECO 1200 E	ECO 1500 E
Fan Power	W	140/200	150/230	200/300
Current	A	0,38/0,63	0,46/0,72	0,57/0,88
Voltage (ventilation)	V	230V~1	230V~1	230V~1
Speed	r.p.m.	1.350	1.350	1.350
Min. /max. Airflow	m ³ /h	950/1025	1225/1300	1500/1625
Heating Power	kW	6	7,2	9
Voltage (heating)*	V	400V~3	400V~3	400V~3
Strength to 400V	A	8,8	11,8	16,5
Temp. Rise	°C	22/20	22/20	22/20
Peso	Kg	16	18,2	22,9
Noise level	dB(A)	65	67	69
Maximum Height**	M	2,2	2,2	2,2

(**) Depending on installation conditions

Dimensions



L	A
1000	320
1200	420
1500	570